

TURKISH AIRLINES CIP LOUNGE

Autoban

With the aim of taking the pre-flight experience to a higher level for commercial clients, Autoban's CIP Lounge for Turkey's national airline sets out to embody Turkish hospitality at its best, in a relaxed and contemporary setting. For the design, the office returned to the concept of *kervansaray* – the traditional roadside inn where travellers and merchants once rested on their journeys. The designers also revisited the curvy domes of Istanbul's many mosques and the unique architecture of the Grand Bazaar. Translating the arcade system of such traditional architecture into modern terms resulted in a series of bubble-like portals, which create a structure-within-a-structure in the existing shell of the airport hall. This substructure brings a more human scale to the gigantic airport and lends warmth to the space.

The 5-m-high spherical pods divide the space into sections while maintaining open views of the rest of the lounge and so providing a sense of continuity. Each of these pods serves a specific purpose: there's a library, restaurant, tea garden, piano area, screening room, meeting room, kids' playground and rest rooms. From the entrance, they are organised in order of the priority of passenger needs.

The black elements that frame the modules hide all the mechanical and electrical systems, while bringing a visual balance to the all-white backdrop of the arches. Autoban also installed a white cage featuring a traditional Turkish Seljuk pattern and covered one of the concave walls with a map of the world. Wood floors and pieces of Autoban's signature furniture collection, such as the Throne chairs and the Cloud table, complete the picture.

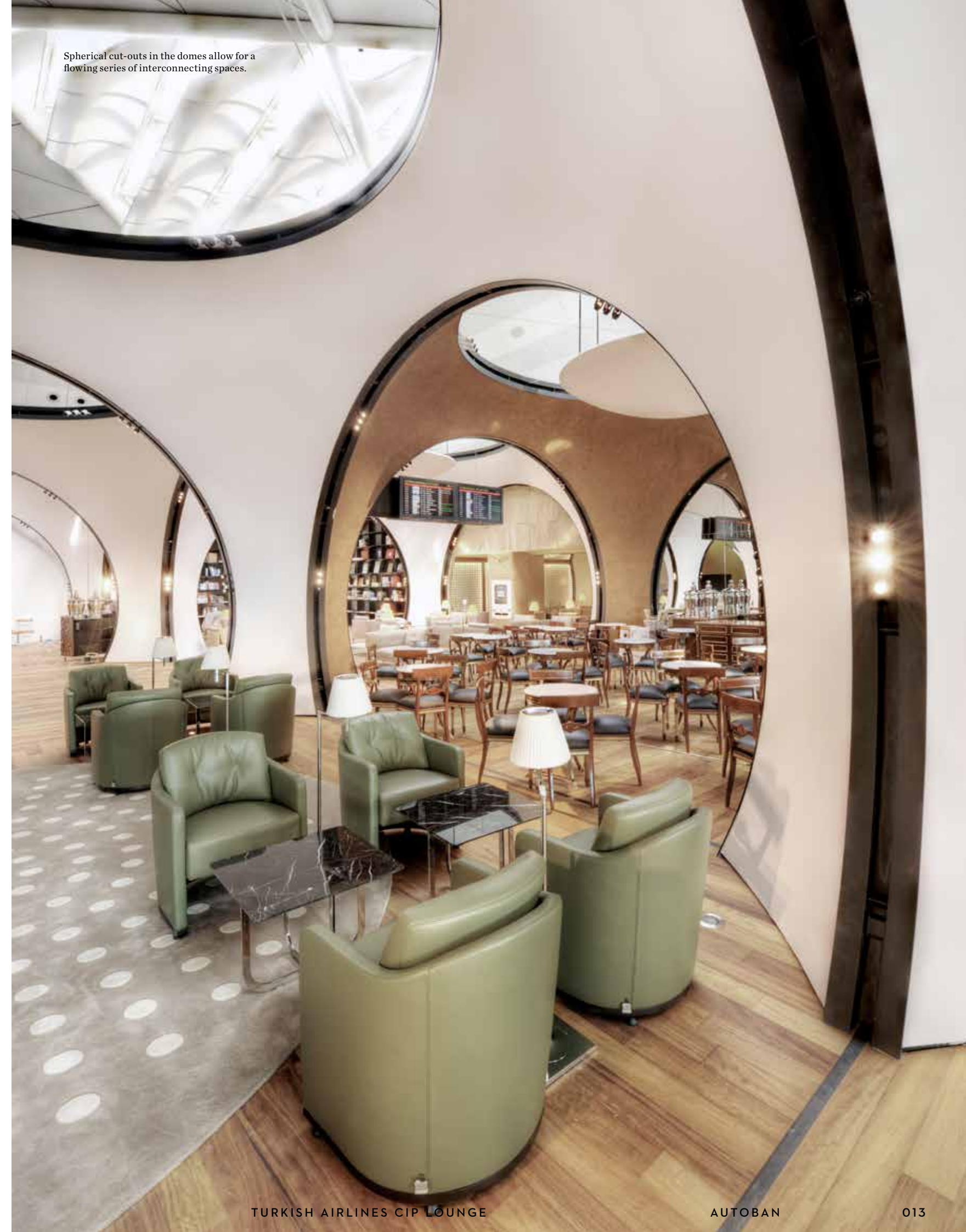
WHERE **Istanbul Atatürk Airport, Turkey**
OPENING **July 2011**
CLIENT **Turkish Do&Co**
FLOOR AREA **4200 m²**
WEBSITE **turkishairlines.com**

MINIMUM AGE **n/a**
SIGNATURE DRINK **Turkish Coffee**
PRICE OF A GLASS OF HOUSE WINE **Complimentary**
OPENING HOURS **24/7**
CAPACITY **2000 guests daily**

PHOTOS **Bülent Özgören**



As passengers begin their journey around the globe (or stop-off in transit), they can catch up in the 'news lounge' portal on world happenings.



Spherical cut-outs in the domes allow for a flowing series of interconnecting spaces.



Delicate Ottoman patterns lend lightness to a number of the portal structures.

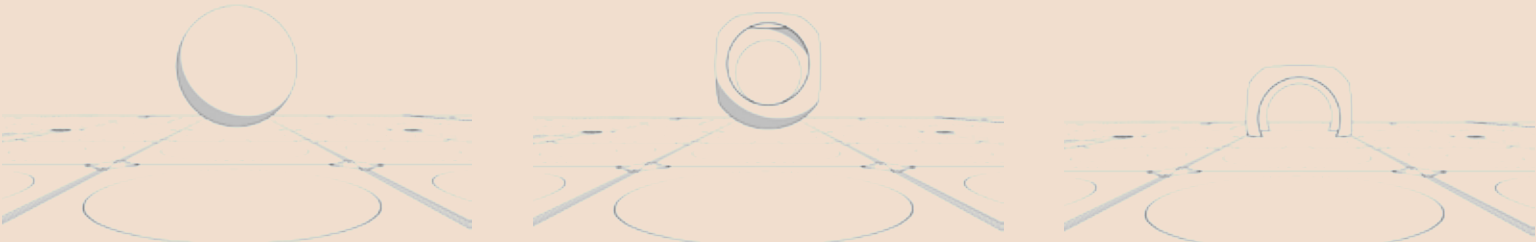
The designers revisited the curvy domes of Istanbul’s many mosques



The initial sketch of the concept portrays a kaleidoscopic spherical portal.

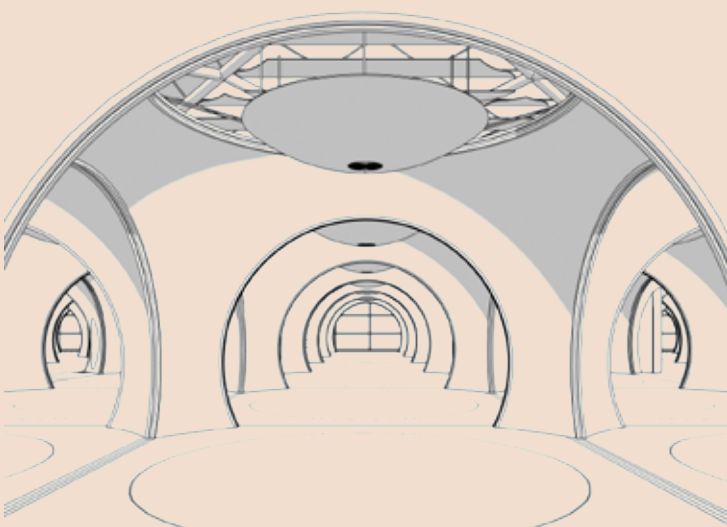
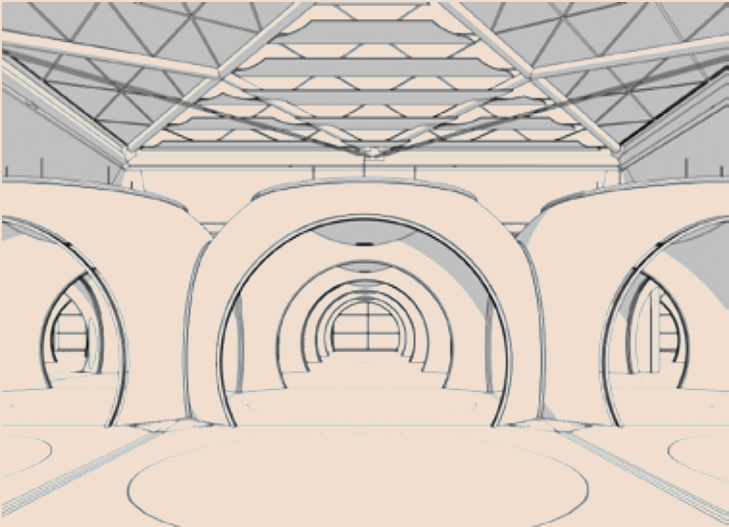
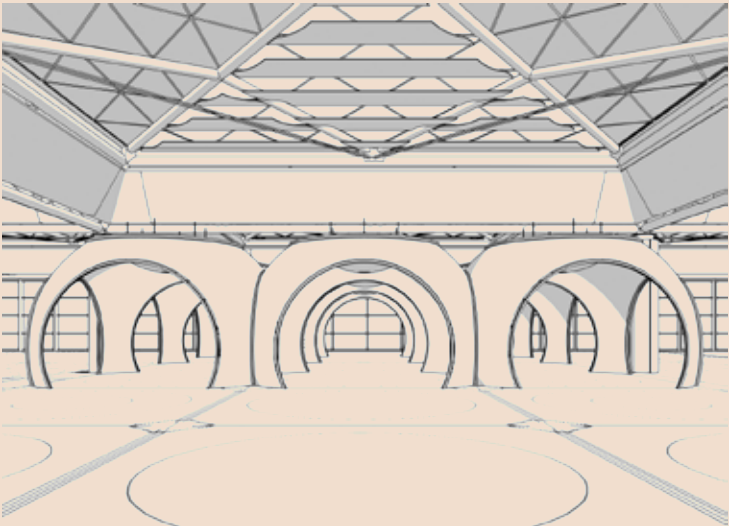
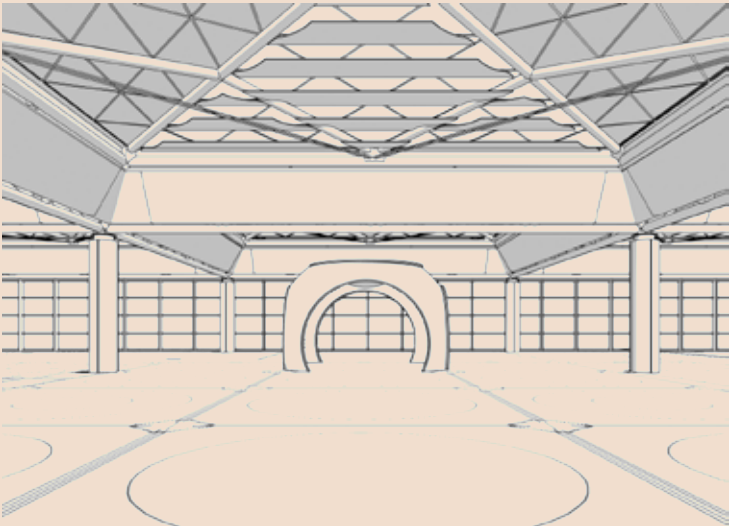
CONCEPT

The design scheme concept started with a sphere that gradually morphed into a pod-like portal.

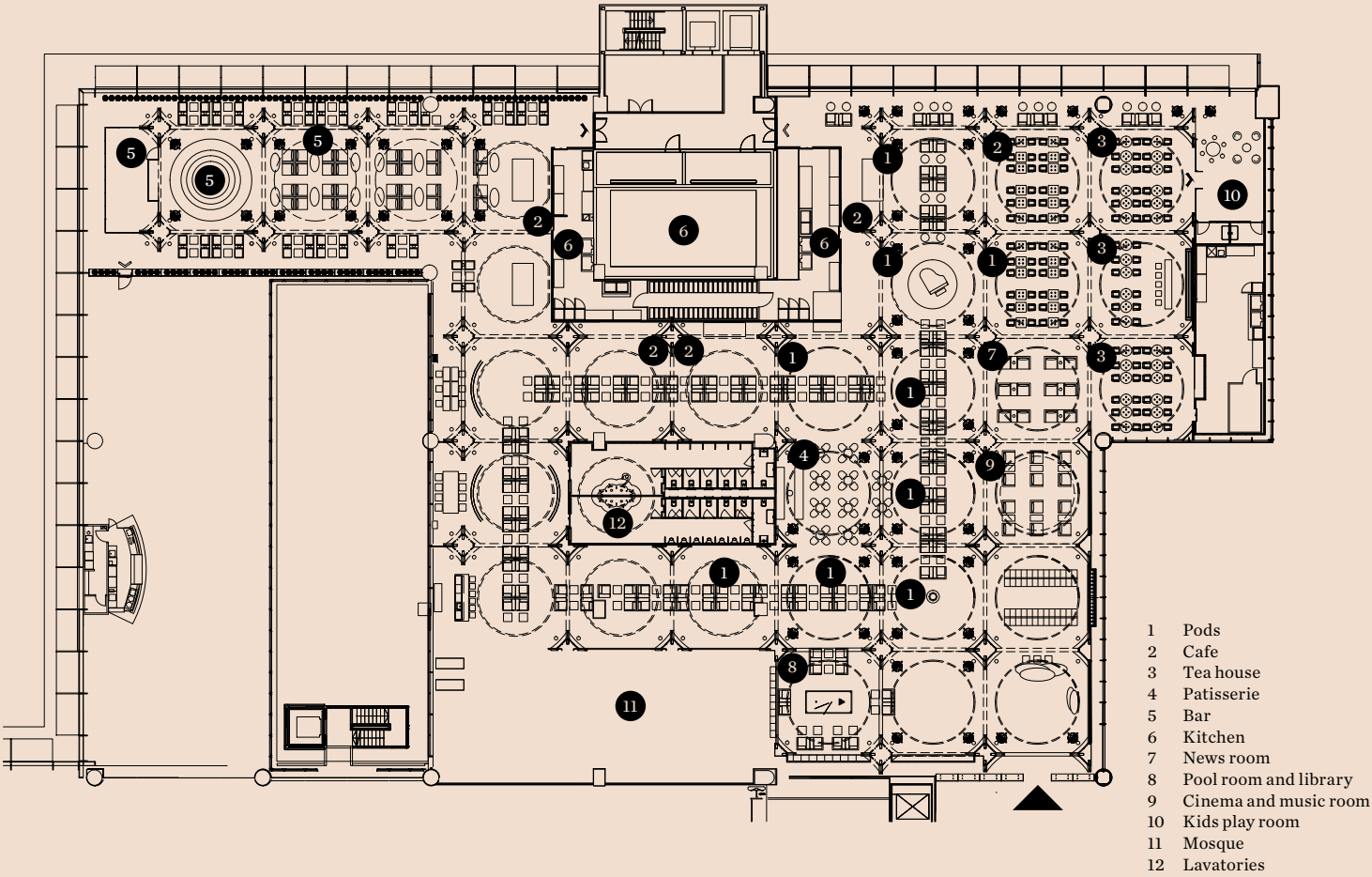


DRAWINGS

A series of interconnecting portals create a visual illusion within the vast interior of the airport, each one is a new space to be discovered.

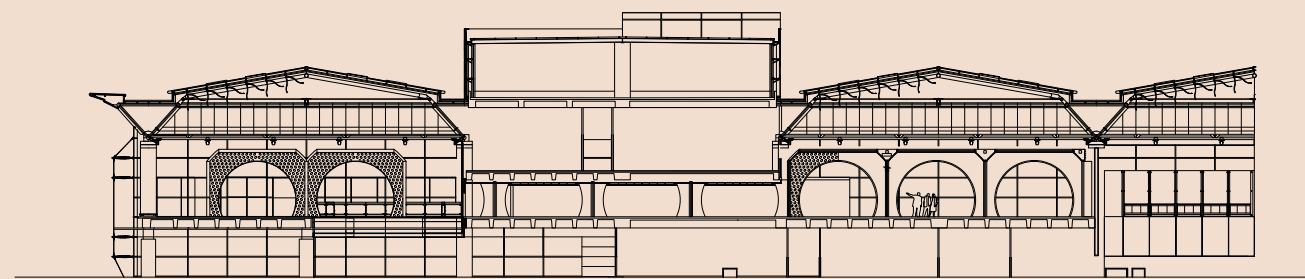


FLOOR PLAN



5-m-high spherical pods divide the space into sections while maintaining open views of the rest of the lounge

SECTION



The portals bring the airport's gigantic proportions to a more human level.

